

SwiftCleanse

Suppression & Home Mover Software

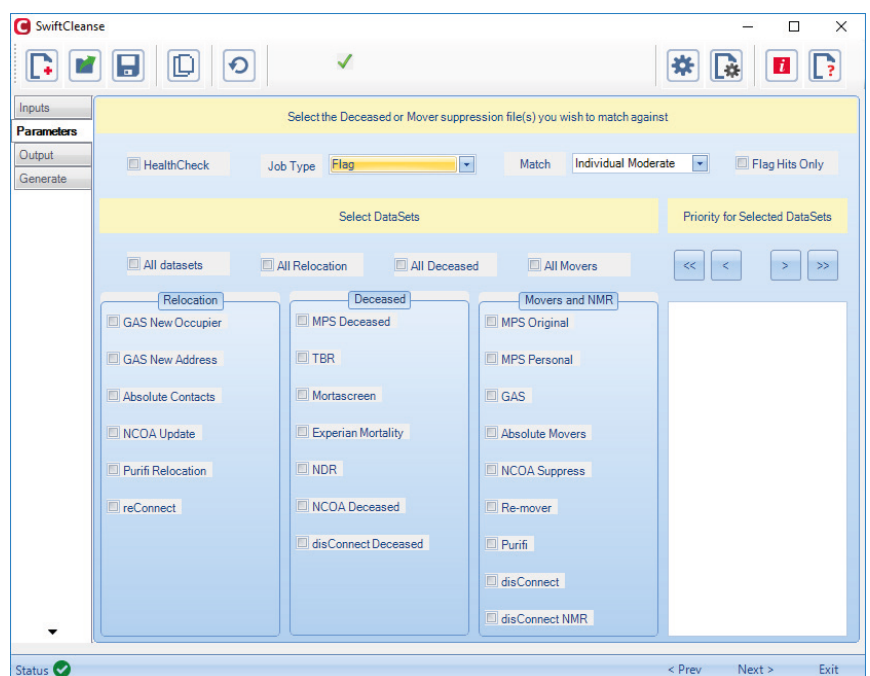
Meet your data hygiene requirements by gaining instant access to over 450 million gone away, deceased and home mover records

Utilise leading suppression and home mover data with no volume commitments.

SwiftCleanse offers a full suite of data hygiene files from Royal Mail, REaD Group, Wilmington Millennium, Experian, The Ark & DBS Data.

Choose which files to use and set the hierarchy to ensure cost efficiency while tailoring your data hygiene service to each client or job.

The easy to use interface requires no database knowledge and can also be automated via the command line or integrated into online systems via the SwiftCore API.



SwiftCleanse Features

✓	Over 450 million records Gain instant access to over 450 million suppression and home mover records
✓	All major data providers supported Access files from Royal Mail, REaD Group, Wilmington Millennium, Experian, The Ark & DBS Data
✓	Deceased and Gone Away Suppression Remove deceased and gone away records to avoid unnecessary costs and brand damage
✓	Home Mover tracking Keep in touch with customers when they move by appending new address details
✓	New Occupier appending Identify the new occupant of an address where the previous resident has moved
✓	Suppress or Flag Suppress records for one off campaigns or permanently flag records to update the original data source
✓	Healthcheck reporting Run data healthchecks before committing to any chargeable processing
✓	Automation Run your data hygiene as an automated process via command line
✓	Integration Integrate data cleansing processes into your existing workflows by utilising the SwiftCore RESTful API
✓	Hierarchy Control which datasets to use and the hierarchy to maximise cost efficiency or cater for client preferences
✓	SwiftCore SwiftCleanse uses the power of our SwiftCore platform, using scalable and immensely fast infrastructure
✓	Security SwiftCore is GDPR compliant and has been audited and approved by third party cyber security experts
✓	Save management time We manage and update all datasets, and look after all the royalty declarations on your behalf



“Within 2 months of working with the Swift Suite we have automated 50% of all direct mail jobs.”

James Beal, Head of Technical Production, Gecko