



SwiftSort

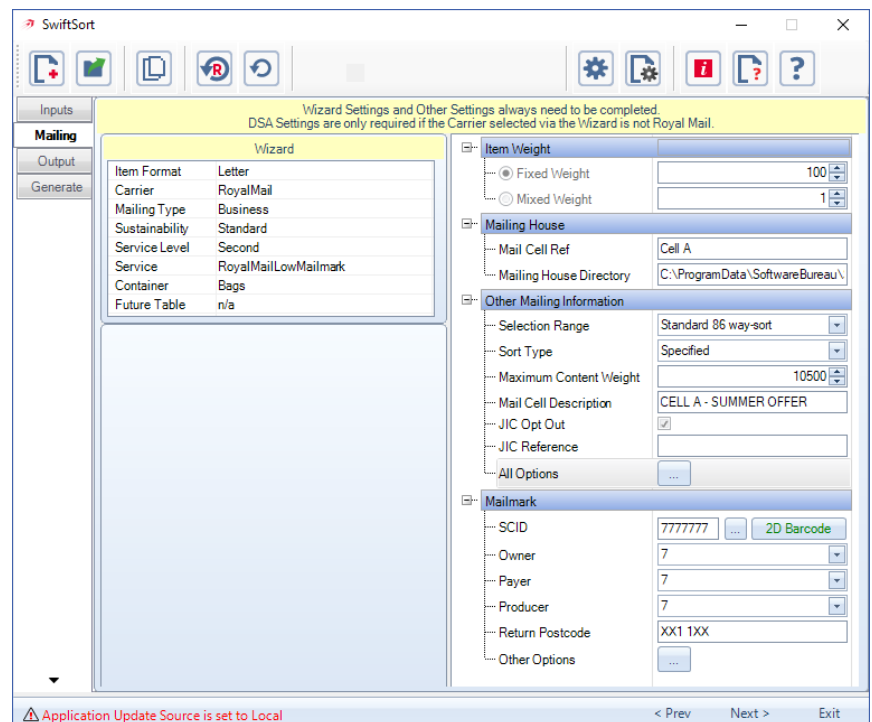
Postal Sortation Software

Automation-ready postal sortation software for volume direct mail with support for all major carriers.

Maximise postage discounts with a single, easy to use postal sortation solution.

SwiftSort offers comprehensive sortation options for Royal Mail, Whistl, Citipost, Secured Mail and UK Mail. Fully Mailmark enabled, SwiftSort adds the delivery point suffix (DPS) and can create Mailmark barcodes.

Improve efficiency by automating or integrating SwiftSort. Run sortation jobs remotely via the command line such as at a specific time overnight or when a file arrives in a hot folder.



SwiftSort Features

- ✓ **Sort for all carriers**
Comprehensive sortation solution for all Royal Mail, Whistl, UK Mail, Secured Mail, Citipost sorts.
- ✓ **Automate postal sortation**
Improve efficiency and remove costs by automating postal sortation from the command line.
- ✓ **Import data in any format**
Import comma, pipe and tab separated files, fixed width, ODBC or xml format.
- ✓ **Step-by-step wizard**
Clear wizard with conditional options for easy sort setup and minimising opportunities for errors.
- ✓ **Save project and file definitions**
Save all sort parameters or file formats for future use or for automation via the command line.
- ✓ **Run basic data cleansing**
SwiftSort can fix basic postcode formatting errors and remove punctuation or union words.
- ✓ **Manage Mailmark SCID's**
Add, remove and save SCID's quickly and easily from Mailmark control tab.
- ✓ **Add Mailmark additional data**
Add user defined data into Mailmark barcode – fixed text or from a data field
- ✓ **Inject seed records and manage seed files**
Store client or inhouse seed files and easily inject to any sort.
- ✓ **Monitor logs and easily troubleshoot sort errors**
Real time progress reports provide job monitoring and error logging
- ✓ **Estimate volume discounts**
Enter a daily mailing volume to achieve a more accurate cost estimate for your campaign.
- ✓ **Opt-in or out of Joint Industry Committee (JIC)**
Easily opt-in or out of the Joint Industry Committee with a simple tick box and reference.



“It just works, anything we need to do to minimise mail costs is covered with SwiftSort.”

Simon Swan, Head of Data and Mailing, Lonsdale Print Solutions